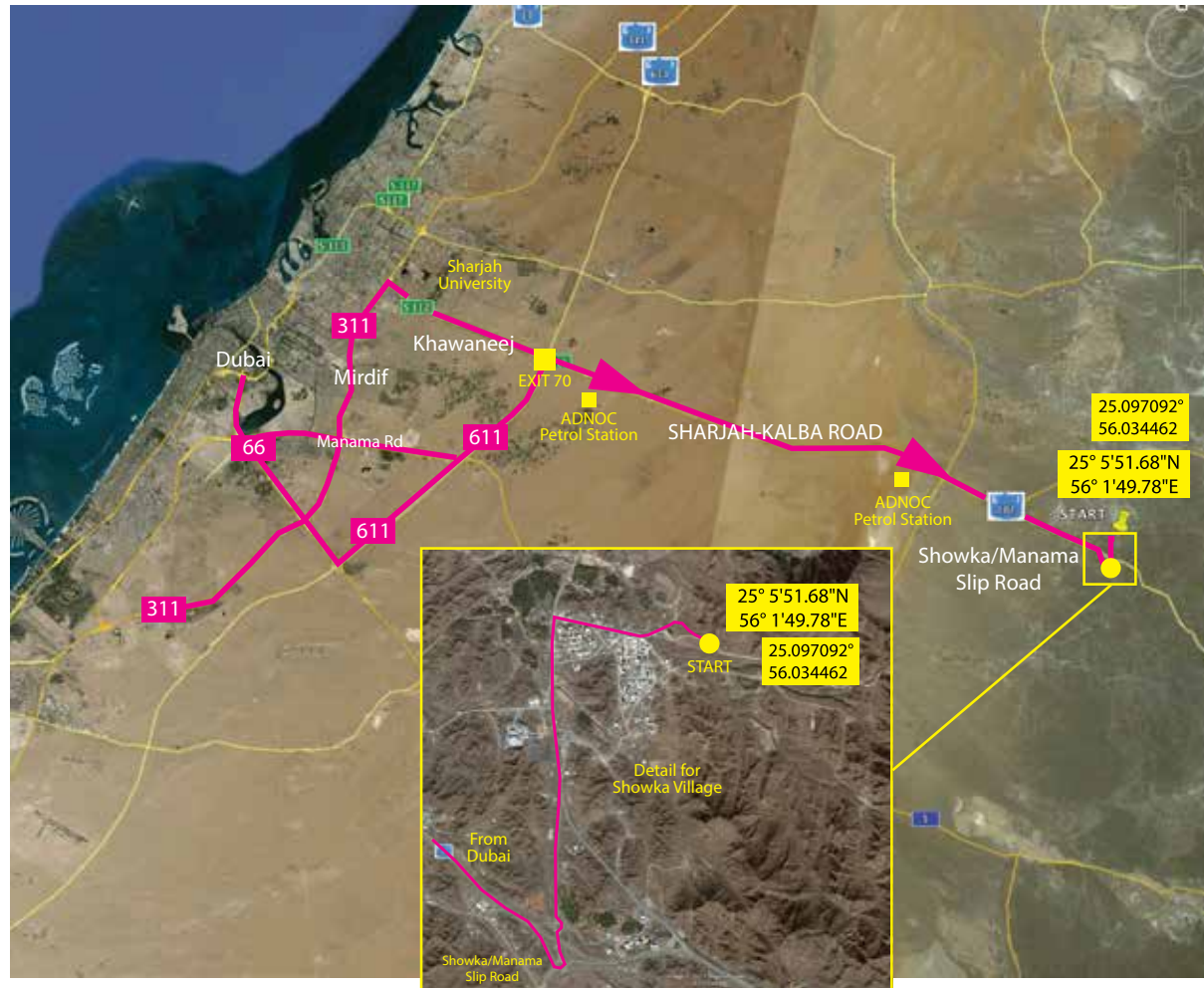


# LOCATION MAP



1. Take the 611 from Dubai, direction Sharjah
2. At the Sharjah/Kalba turnoff from 611 take a right and you will drive past the Emarat Petrol Station on the right.
3. Continue along the road until you see the sign for Showka on the right. Turn off and double back under the bridge at the R/A and continue straight past one sign for Showka on the right and until you reach a row of shops and a second sign pointing right to Showka. Turn in and you will see a tall blue water tower on your left - drive across the small bridge following the tarmac road around some villas and a clinic. The road will turn into gravel and 300m further you will see the start line.

START LINE GPS COORDS:

**N25°5'51.68 E56°1'49.78**

# TRAIL RUN COURSE



**START GPS**  
25° 5'51.68" N  
56° 1'49.78" E

**OUT & BACK COURSE**



**RACE BRIEF**  
**6:45PM**

**START GUN**  
**7:00PM SHARP!**  
**GOOD LUCK**

**\*30K CUT-OFF TIME**  
**5 HOURS**

**IN CASE OF EMERGENCY**  
**+971 50 4422 934**  
**thuraya +882 162 1206101**

OPERATIONAL ON RACE DAY ONLY